

CCI25 Accommodation Options

There are three main options for accommodation at the conference. Edinburgh is a popular tourist destination and popular hotels can get fully booked quite early. We advise you to secure your accommodation as early as possible.

University accommodation: Paul Stobart Building

- We have 20 rooms reserved for conference delegates in university's visitor accommodation facility at the rates of £84.00 (Single Occupancy) and £96.00 (Double Occupancy) per night. Please note breakfast is not included.
- The Paul Stobart Building is centrally located on campus, just a short walk from the main Heriot-Watt reception and the National Robotarium.
- Availability is limited and rooms will be allocated on a first-come, first-served basis. These 20 rooms will be held for CCI25 delegates **13 May 2025**. After this date, any remaining rooms in that block will be released, and bookings will depend on general availability at the hotel.
- Details on how to reserve these rooms can be found on here (page 3).

Campus hotel: Marriott Courtyard, Edinburgh West

- [The Marriott Courtyard Hotel](#) is based on campus, a short walk to and from the National Robotarium.
- Here (page 4) are the details of how to book at the Marriott. This gives conference delegates a 20% discount against standard rates. There are very limited number of rooms at this hotel, and rooms would be subject to availability and rate change at the time of booking.
- However, please also search for other special offers (e.g. a 3-night discounted rate not linked to the conference) to make sure that you get the best rates. Please also compare prices with those available through general hotel booking engines.

Off campus hotels and other accommodation

- See here (page 5) of this document for suggestions.
- City centre hotels are marked with an asterisk. These are typically in the area between Princes Street and Haymarket and are convenient for the main bus routes from the city centre to campus with a typical journey time of 30-45 minutes depending on the time of day and your hotel location (see www.lothianbuses.com). There are many other hotels in the same area and those listed are just indicative of the range of hotels available and locations rather than specific recommendations. Other city centre locations near
- alternative bus routes to campus are around the Grassmarket and Tollcross areas (e.g. search for Grassmarket, Lauriston Place or Bread Street).

- West Edinburgh hotels (no asterisk). These are located nearer to the campus (and are also nearer the airport) but are typically not on a frequent bus route and so require a car, minibus or taxi to get to campus.
- As with the Marriott, please do check hotel booking engines as well as hotel websites to get the best prices for your stay.
- Short-term lets. Edinburgh also has a wide range of short-term lets available for small groups who prefer to stay in an apartment rather than a hotel.

Disclaimer:

For all accommodation options you should check yourself that the chosen accommodation meets your requirements in terms of quality and location.



How to book University accommodation - Paul Stobart Building:

Please contact the Heriot Watt reception team at frontdesk@hw.ac.uk or call 0131 451 3501 to reserve a room. When booking, please quote “**Climate Change and Insurance 2025**”.

Please note that you must pay in advance before arrival.



Accommodation information:

The main reception is open from 08:00 – 20:00 Monday to Friday and 09:00-17:00 Saturday and Sunday. The check-in time is any time after 14:00 and the check-out is by 10:00.

Check-in is also available out of hours (24/7) – keys are always to be collected at the Main Reception of Heriot-Watt University. If you arrive out with our opening hours , please call our Safeguarding Team on [+44 \(0\)131 451 3500](tel:+441314513500) and a colleague will meet you at the reception to hand you the key.

Breakfast Options:

As Paul Stobart is offered as a Room-only booking, please note there are a variety of catering outlets available across campus – The Piece and Central Dining are usually open Monday – Friday from 8 am and Bistro 1776 in Edinburgh Business School opens from 8:30 am. On the weekends Oriam Café opens from 8:30 am– 3:30 pm and Marriot Courtyard West is open daily for all-day dining serving breakfast, lunch dinner, coffees, and snacks. These may be at times subject to change so please check with reception when you check in.

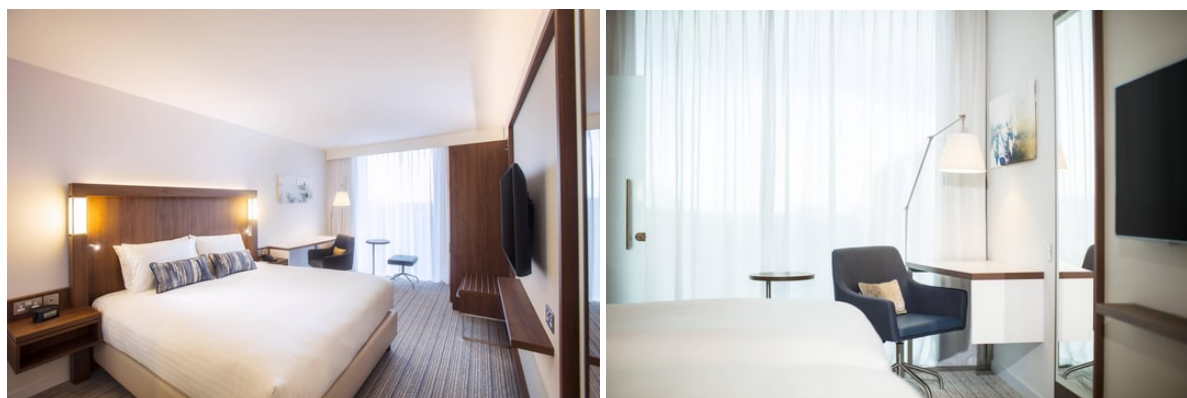
If you have any questions, please contact the team at frontdesk@hw.ac.uk or call 0131 451 3501.



How to book [Courtyard by Marriott, Edinburgh West](#):

Please contact the hotel reservation team at reservations@courtyardedinburghwest.com or call 0131 526 3210 to reserve a room. When booking, please quote “**Climate Change and Insurance 2025**”.

Please note this rate is available for people travelling to attend CCI25 only from 9th to 12th September. The 20% discount would be applied to hotel flexible rate (Room Only), which offers free cancellation up until 12pm the day prior to arrival. Guests only need to pay on arrival. Breakfast can be added on at a supplement for £10.00 per person per day.



Parking:

Courtyard offers complimentary onsite parking, please contact the hotel for details if you require a parking space.

If you have any other questions, please contact the hotel reservations team for further details.

Off Campus Hotel Suggestions

**hotels within central Edinburgh*

Name, Address & Website	Telephone No.	Approx. Distance to HWU
Novotel Edinburgh Park 15 Lochside Avenue, EDINBURGH, EH12 9DJ https://all.accor.com/hotel/6515/index.en.shtml	0131 619 2802	2.5 miles
Premier Inn Edinburgh Park (The Gyle) 1 Lochside Court, Edinburgh Park, Edinburgh, EH12 9FX https://www.premierinn.com/gb/en/hotels/scotland/lothian/edinburgh/edinburgh-park-airport.html	0333 321 9255	2.5 miles
Ibis Budget Hotel Edinburgh Business Park, 6 Lochside View, EDINBURGH, EH12 9DH https://all.accor.com/hotel/8710/index.en.shtml	0131 446 5900	2.5 miles
Dalmahoy Hotel & Country Club Kirknewton, Edinburgh, EH27 8EB https://www.dalmahoyhotelandcountryclub.co.uk	0131 333 1845	3.5 miles
Delta Hotels Edinburgh by Marriott 1111 Glasgow Road, Edinburgh, EH12 8NF https://www.marriott.com/en-gb/hotels/edide-delta-hotels-edinburgh/overview/	0131 334 9191	3.5 miles
Leonardo Royal Hotel Edinburgh Haymarket* 1 Morrison Link, Edinburgh, EH3 8DN https://www.leonardohotels.co.uk/hotels/edinburgh/leonardo-haymarket	0131 460 4600	5 miles
Point A Hotels* 152 Morrison Street, Edinburgh, EH3 8EB https://www.pointahotels.com/our-hotels/edinburgh/	0131 526 4500	5 miles
VOCO Edinburgh Haymarket* 46 Torphichen Street, Edinburgh EH3 8JB https://vocoedinburghhaymarket.com-edinburgh.com/	0131 378 1999	5.1 miles
CITYROOMZ Edinburgh* 25 - 33, Shandwick Place, Edinburgh, EH2 4RG https://cityroomz.com/	0131 229 6871	5.2 miles
Doubletree by Hilton Edinburgh Airport 100 Eastfield Road, Ingliston, Edinburgh, EH28 8LL https://www.hilton.com/en/hotels/ediapdi-doubletree-edinburgh-airport	0131 519 4400	4.5 miles
Moxy Edinburgh Airport 1 Fairview Road, Edinburgh, EH28 8AP https://www.marriott.com/en-gb/hotels/ediox-moxy-edinburgh-airport/overview/	0131 608 1172	5 miles
Norton House Hotel (near Edinburgh Airport) Ingliston, Edinburgh, EH28 8LX www.handpickedhotels.co.uk/nortonhouse	0131 333 1275	5 miles
Travel Lodge Various locations throughout Edinburgh: https://www.travelodge.co.uk/uk/edinburgh/index.html		