

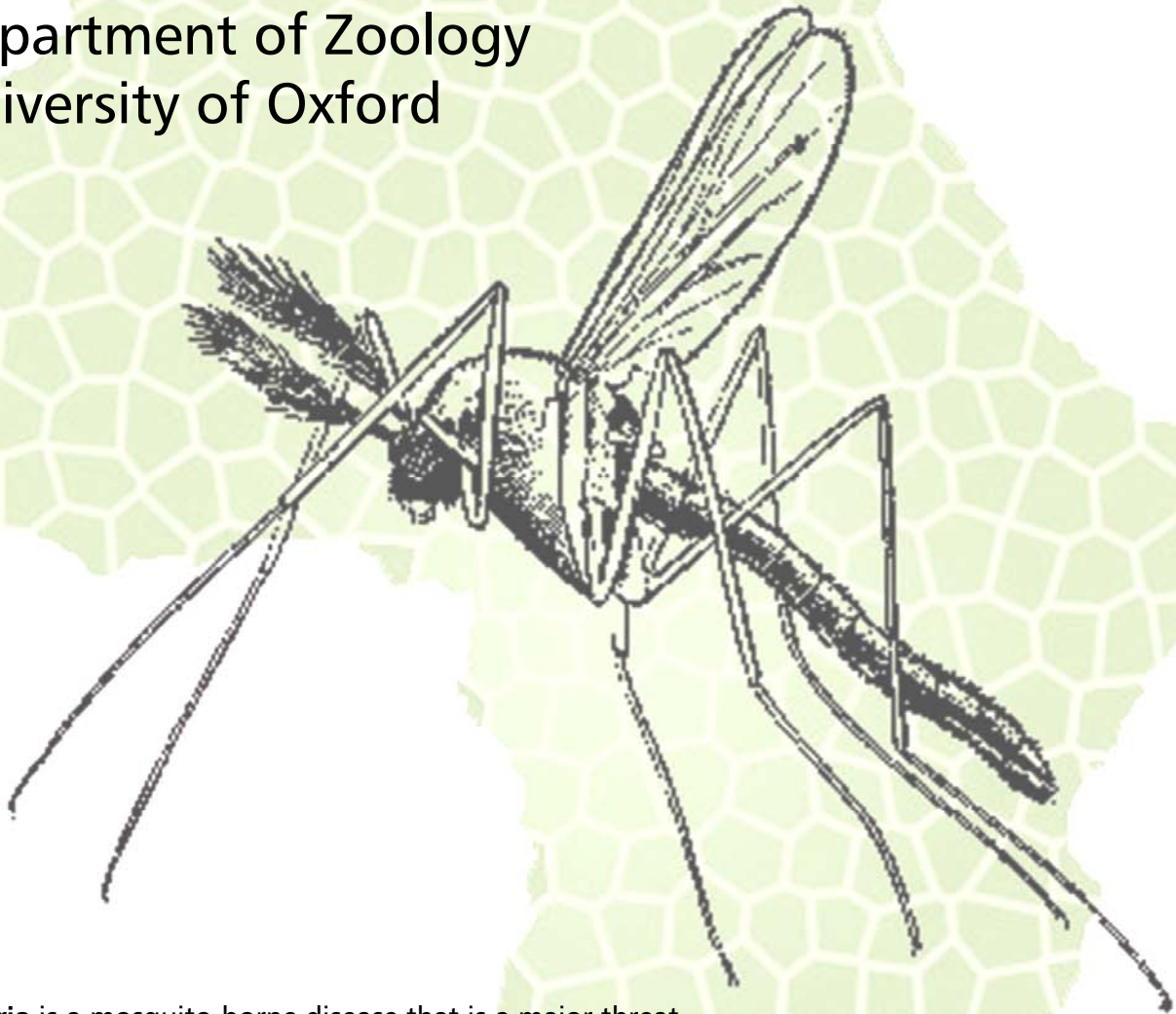
Malaria, Mosquitoes and Models

a public lecture by

Professor Charles Godfray,

Department of Zoology

University of Oxford



Malaria is a mosquito-borne disease that is a major threat to human life throughout the tropics. At the moment most mosquito-control strategies involve insecticides. However, worries that mosquitoes are developing insecticide resistance have generated many new ideas about control strategies, some involving mosquito pathogens, others novel genetic techniques. The talk will examine some of these ideas, and show how mathematical and computer modelling is used as a tool to explore which strategies may have the greatest impact in reducing disease

6pm, Wednesday, 17 June 2009

Royal Society of Edinburgh, 22 George Street, Edinburgh

This is a **free event** but tickets must be reserved.

Please telephone the ticket line on 0131 240 2780 or visit

<http://www.royalsoced.org.uk/events> to reserve a ticket

Organised by the International Centre for Mathematical Sciences and the Royal Society of Edinburgh as part of the ICMS workshop on Stochastic Population Dynamics and Applications in Spatial Ecology (<http://icms.org.uk/workshops/spatialecology>)

